

C A M S

5TH CATEGORY - HISTORIC RACING

GROUP Na

APPROVED VEHICLE SPECIFICATION

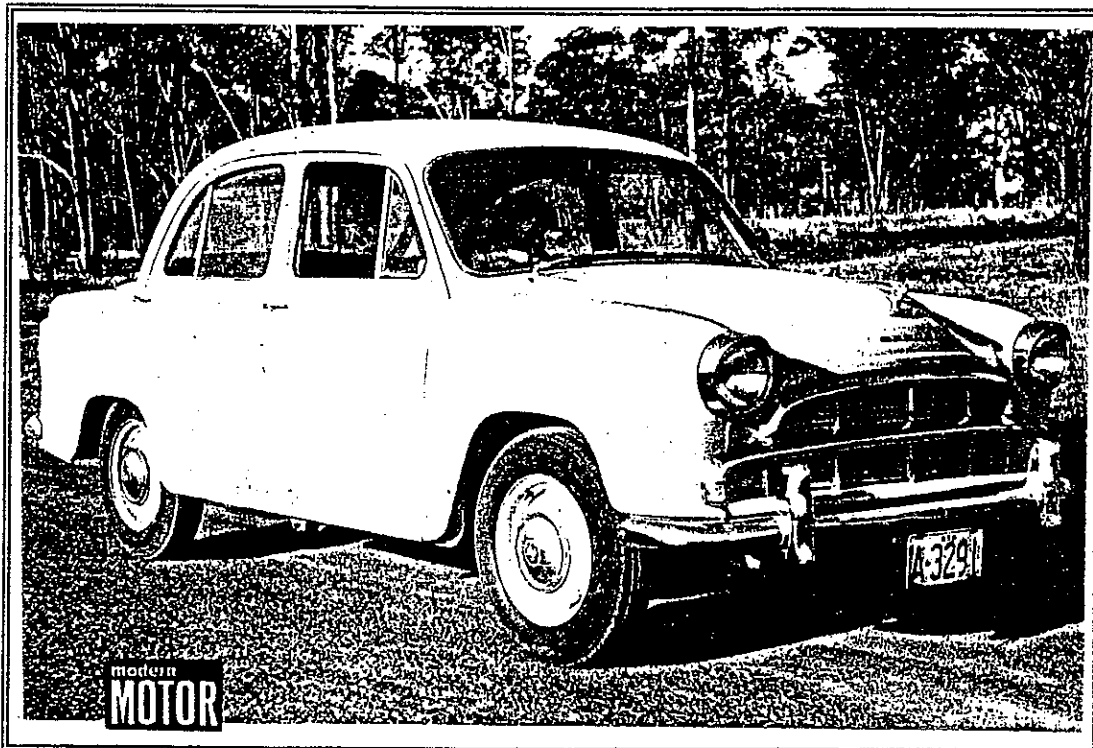
This form details the approved specification of individual vehicle models in the Na production saloon car group. To be issued with an Historic log book, cars need to comply with these specifications, the physical appearance shown in the illustrations and the general historic rules as detailed in the current CAMS manual.

Make of car: **MORRIS OXFORD** Model: **SERIES 2**

Period of original manufacture:

CAMS Historic group: **Na**

Date of issue of this Document: **23/06/95**



SECTION 1 - CHASSIS

1.1 CHASSIS FRAME

Description : UNITARY CONSTRUCTION
Manufacturer : MORRIS Period of manufacture: 1954-
Chassis nos. from : to:
Chassis no. location : FIREWALL L/H SIDE
Material : MILD STEEL
COMMENTS : NIL

1.2 FRONT SUSPENSION

Description : IFS SINGLE ARMS TOP AND BOTTOM WITH TRAILING LINKS
Spring medium : TORSION BAR
Damper type : TUBULAR Adjustable : N/A
Anti-sway bar : NO Adjustable : N/A
Suspension adjustable NO Method : N/A
COMMENTS : RIDE HEIGHT AND SPRING RATE FREE

1.3 REAR SUSPENSION

Description : LIVE AXLE
Spring medium : SEMI ELLIPTIC LEAF
Damper type : TUBULAR Adjustable : NO
Anti-sway bar : YES Adjustable : NO
Suspension adjustable NO Method : N/A
COMMENTS : RIDE HEIGHT AND SPRING RATE FREE
FORE AND AFT LOCATION ALLOWED

1.4 STEERING

Type : RACK AND PINION Make : BMC
COMMENTS : NIL

1.5 BRAKES

	<u>Front</u>	<u>Rear</u>
Type :	DRUM	DRUM
Dimensions :	9"	9"
Material of drum :	CAST IRON	CAST IRON
No. cyls per wheel :	2 (2LS)	1(SINGLE LS)
Actuation :	HYDRAULIC	HYDRAULIC
Drum; Make :	LOCKHEED	LOCKHEED
Master cyl make ;	LOCKHEED	Type : SINGLE
Adjustable bias :	NO	
Servo fitted :	NO	
COMMENTS :	TANDEM M/CYL ALLOWED SERVO ALLOWED	

SECTION 2 - ENGINE

2.1 ENGINE

Make : **MORRIS**
Model : **OXFORD (BMC B SERIES)**
No. cylinders : **4** Configuration : **IN LINE FOUR stroke.**
Cylinder block , materia **CAST IRON**
Bore ; original : **73 mm** Max. allowed : **74.5 mm**
Stroke ; original : **89 mm** Max allowed : **89 mm**
Capacity ; original ; **1489 CC** Max. allowed : **1554 CC**
Cooling method : **WATER**
Identifying marks :
COMMENTS : **NIL**

2.2 CYLINDER HEAD

Make : **MORRIS**
No. valves per cyl : **2** Inlet : **1** Exhaust : **1**
No of ports, total : **5** Inlet : **2** Exhaust : **3**
No camshafts : **1** Location : **BLOCK** Drive : **CHAIN**
Valve actuation : **OHV**
Spark plugs per cyl. : **1**
Identifying marks :
COMMENTS : **NIL**

2.3 LUBRICATION

Method : **WET SUMP**
Oil cooler standard : **NO** Location : **N/A**
COMMENTS : **OIL COOLER ALLOWED**

2.4 IGNITION SYSTEM

Type : **DISTRIBUTER AND COIL** Make : **LUCAS**
COMMENTS : **NIL**

2.5 FUEL SYSTEM

Carburettor ; Make : **SU** Model : **H2** No. : **1**
Size : **1.25"**
Fuel injection ; Make : **NO** Type : **N/A**
Supercharged : **NO** Type : **N/A**
Make : **N/A** Drive : **N/A**
COMMENTS : **2 x H TYPE SU CARBURETTORS ALLOWED**
THROAT SIZE UNRESTRICTED

SECTION 3 - TRANSMISSION

3.1 CLUTCH

Make : BORG AND BECK Type : A.6-G Dia. : 8"
No. of plates : 1
Actuation : HYDRAULIC
COMMENTS : NIL

3.2 TRANSMISSION

Make : MORRIS Model : BMC B SERIES
Case material : AL. ALLOY
No. forward speeds : 4 Gearchange Type : COLUMN CHANGE
Gearbox location : BEHIND ENGINE
Identifying marks :
COMMENTS : RATIOS FREE

3.3 FINAL DRIVE

Make : MORRIS Model : BMC B SERIES
Wheel drive method : REAR
Ratio : 4.875:1
Differential : FREE Model : BMC B SERIES
COMMENTS : RATIOS FREE

3.4 TRANSMISSION SHAFTS (EXPOSED)

No. 1 Location : TAILSHAFT
Description : TUBULAR
COMMENTS : NIL

3.5 WHEELS AND TYRES

Wheel , type :	DISC	Material :	STEEL
Fixture method :	BOLT ON	No. studs :	4
		<u>Front</u>	<u>Rear</u>
Wheel dia. & rim width ; original :		15 x 4"	15 x 4"
	Allowed :	15 x 5"	15 x 5"
Tyre section ; original :		550 x 15"	550 x 15"
	Allowed :	185 x 15"	185 x 15"
Aspect ratio, minimum :	65%		
COMMENTS :	NIL		

SECTION 4 - GENERAL

4.1 FUEL SYSTEM

Tank location : FRONT OF BOOT Capacity, litres : 48
Fuel pump; type : ELECTRICAL Make : SU
COMMENTS : NIL

4.2 ELECTRICAL SYSTEM

Voltage : 12
Battery; location : ENGINE BAY
COMMENTS : NIL

4.3 BODYWORK

Type : SALOON Material : STEEL
No. of seats : 4 No. doors : 4
COMMENTS : NIL

4.4 DIMENSIONS

Track; front ; 1360 mm Track, rear : 1346 mm
Wheelbase; 2464 mm Overall length : 4343 mm
Dry weight : 1198 kg
COMMENTS : NIL

4.5 SAFETY EQUIPMENT

Fire Extinguisher : REQUIRED
Seat belt : REQUIRED
Roll bar : REQUIRED
Electrical cut off switch : RECOMMENDED
Safety fuel tank : RECOMMENDED
COMMENTS : NIL

AEC 23/6/95