

# C A M S

5TH CATEGORY - HISTORIC RACING

GROUP Na

APPROVED VEHICLE SPECIFICATION

This form details the approved specification of individual vehicle models in the Na production saloon car group. To be issued with an Historic log book, cars need to comply with these specifications, the physical appearance shown in the illustrations and the general historic rules as detailed in the current CAMS manual.

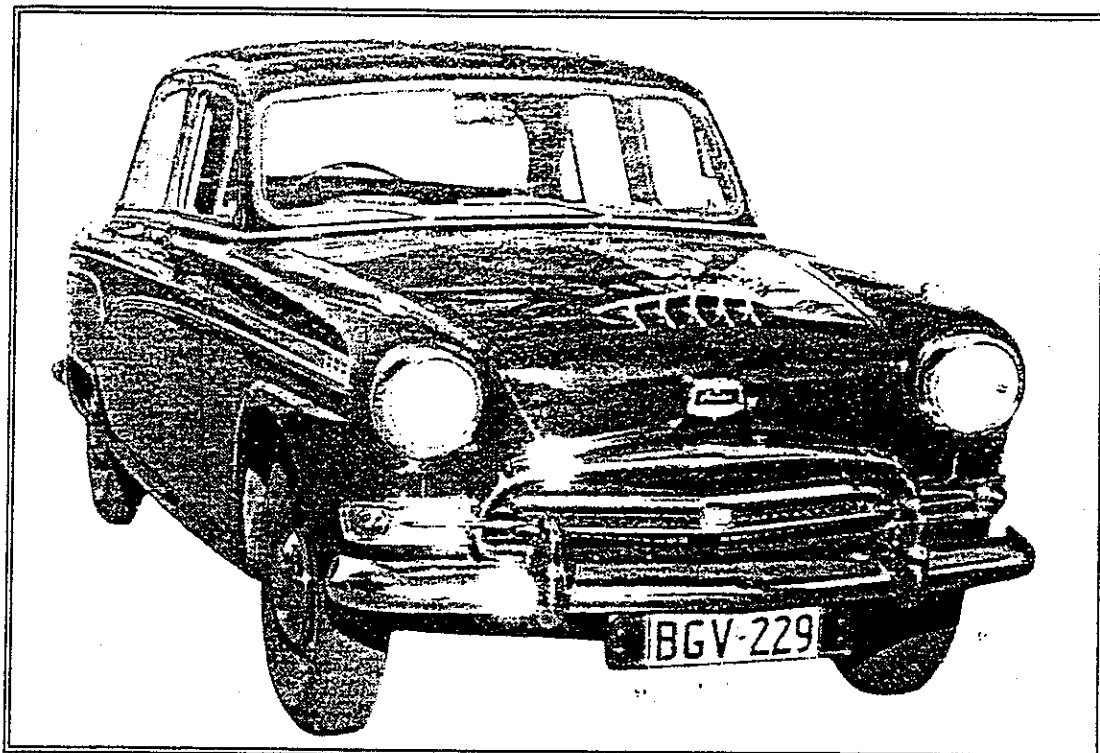
Make of car: **AUSTIN**

Model: **A90, A95, A105**

Period of original manufacture: **A90 1954-56, A95 1956-59, A105 1956-60**

CAMS Historic group: **Na**

Date of issue of this Document: **2/05/95**



## SECTION 1 - CHASSIS

### 1.1 CHASSIS FRAME

Description : UNITARY CONSTRUCTION  
Manufacturer : AUSTIN Period of manufacture: 1954-60  
Chassis nos. from : to:  
Chassis no. location : FIREWALL  
Material : MILD STEEL  
COMMENTS : NIL

### 1.2 FRONT SUSPENSION

Description : IFS TWIN WISHBONES  
Spring medium : COIL  
Damper type : GIRLING LEVER Adjustable : N/A  
Anti-sway bar : NO Adjustable : N/A  
Suspension adjustable NO Method : N/A  
COMMENTS : ANTI SWAY BAR ALLOWED  
RIDE HEIGHT AND SPRING RATE FREE

### 1.3 REAR SUSPENSION

Description : LIVE AXLE  
Spring medium : SEMI ELLIPTIC LEAF  
Damper type : GIRLING LEVER Adjustable : NO  
Anti-sway bar : YES Adjustable : NO  
Suspension adjustable NO Method : N/A  
COMMENTS : RIDE HEIGHT AND SPRING RATE FREE

### 1.4 STEERING

Type : WORM & PEG Make : BMC  
COMMENTS : NIL

### 1.5 BRAKES

	<u>Front</u>	<u>Rear</u>
Type :	DRUM	DRUM
Dimensions :	11"	11"
Material of drum :	CAST IRON	CAST IRON
No. cyls per wheel :	2 (2LS)	1 (SINGLE LS)
Actuation :	HYDRAULIC	HYDRAULIC
Caliper; Make, Material, Type :	N/A	N/A
Master cyl make ;	GIRLING	Type : SINGLE
Adjustable bias :	NO	
Servo fitted :	NO	
COMMENTS :	TANDEM M/CYL ALLOWED SERVO ALLOWED	

## SECTION 2 - ENGINE

### 2.1 ENGINE

Make : AUSTIN  
Model : A90, A95, A105  
No. cylinders : 6 Configuration : IN LINE FOUR stroke.  
Cylinder block , materia CAST IRON  
Bore ; original : 79.4 mm Max. allowed : 80.9 mm  
Stroke ; original : 88.9 mm Max allowed : 88.9 mm  
Capacity ; original ; 2639 CC -Max. allowed : 2743 CC  
Cooling method : WATER  
Identifying marks :  
COMMENTS : NIL

### 2.2 CYLINDER HEAD

Make : AUSTIN  
No. valves per cyl : 2 Inlet : 1 Exhaust 1  
No of ports, total : 12 Inlet : 6 Exhaust 6  
No camshafts : 1 Location : BLOCK Drive : CHAIN  
Valve actuation : OHV  
Spark plugs per cyl. : 1  
Identifying marks :  
COMMENTS : NIL

### 2.3 LUBRICATION

Method : WET SUMP  
Oil cooler standard : NO Location : N/A  
COMMENTS : OIL COOLER ALLOWED

### 2.4 IGNITION SYSTEM

Type : DISTRIBUTER AND COIL Make : LUCAS  
COMMENTS : NIL

### 2.5 FUEL SYSTEM

Carburettor ; Make : A90, A95 : ZENITH Model : No. : 1  
Size : A105 : SU Model : H4 No. : 2  
Fuel injection ; Make : NO Type : N/A  
Supercharged : NO Type : N/A  
Make : N/A Drive : N/A  
COMMENTS : 3 X SU CARBURETTORS ALLOWED  
THROAT SIZE UNRESTRICTED

## SECTION 3 - TRANSMISSION

### 3.1 CLUTCH

Make : BORG AND BECK Type : A6-G Dia. : 9"  
No. of plates : 1  
Actuation : HYDRAULIC  
COMMENTS : NIL

### 3.2 TRANSMISSION

Make : AUSTIN Model : BMC C SERIES  
Case material : C.IRON  
No. forward speeds : 4 Gearchange Type : COLUMN CHANGE  
Gearbox location : BEHIND ENGINE  
Identifying marks :  
COMMENTS : RATIOS FREE & OVERDRIVE ALLOWED

### 3.3 FINAL DRIVE

Make : AUSTIN Model : BMC C SERIES  
Wheel drive method : REAR  
Ratio :  
Differential : FREE Model : BMC C SERIES  
COMMENTS : RATIOS FREE

### 3.4 TRANSMISSION SHAFTS ( EXPOSED )

No. 1 Location : TAILSHAFT  
Description : TUBULAR  
COMMENTS : NIL

### 3.5 WHEELS AND TYRES

Wheel , type :	DISC	Material :	STEEL
Fixture method :	BOLT ON	No. studs :	5
		Front	Rear
Wheel dia. & rim width ; original :		15 x 4.5"	15 x 4.5"
	Allowed :	15 x 5"	15 x 5"
Tyre section ; original :		640 x 15	640 x 15
	Allowed :	205 x 15	205 x 15
Aspect ratio, minimum :	65%		
COMMENTS :	NIL		

## SECTION 4 - GENERAL

### 4.1 FUEL SYSTEM

Tank location : FRONT OF BOOT Capacity, litres : 66  
Fuel pump; type : MECHANICAL Make : AC  
COMMENTS : NIL

### 4.2 ELECTRICAL SYSTEM

Voltage : 12  
Battery; location : ENGINE BAY  
COMMENTS : NIL

### 4.3 BODYWORK

Type : SALOON Material : STEEL  
No. of seats : 5 No. doors : 4  
COMMENTS : NIL

### 4.4 DIMENSIONS

Track; front : 1308 mm Track, rear : 1301 mm  
Wheelbase; 2665 mm Overall length : 4572 mm  
Dry weight : 1395 kg  
COMMENTS : NIL

### 4.5 SAFETY EQUIPMENT

Fire Extinguisher : REQUIRED  
Seat belt : REQUIRED  
Roll bar : REQUIRED  
Electrical cut off switch : RECOMMENDED  
Safety fuel tank : RECOMMENDED  
COMMENTS : NIL