



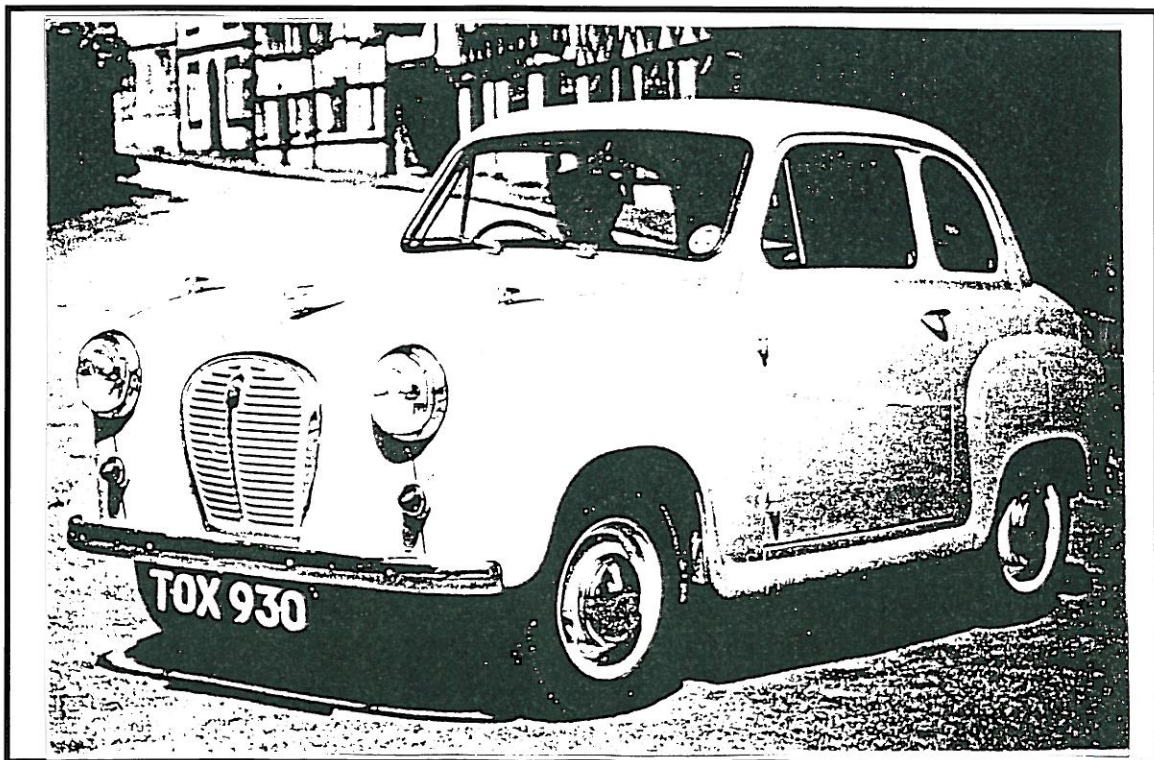
5TH CATEGORY - HISTORIC RACING

GROUP Na

APPROVED VEHICLE SPECIFICATION

This form details the approved specifications of individual vehicle models in the 5th Category Historic car group. To be issued with an Historic Log Book, cars need to comply with these specifications, the physical appearance shown in the illustrations and the general historic rules as detailed in the current CAMS Manual of Motor Sport.

Make of Car:	AUSTIN	Model:	A30 & A35
Period of Original Manufacture:	A30 1951-56	A35 1956-59	
CAMS Historic Group:	Na		
Date of issue of this document:	3/5/95		
Updated:	8/9/09		



CHASSIS

1.1 CHASSIS FRAME

Description: Unitary construction **Period of Manufacture:** 1951-59
Manufacturer: AUSTIN
Chassis no. from: A30 C101 to C224327 A35 C103 to C205108
Chassis no. location: Firewall
Material: Steel
Comments:

1.2 FRONT SUSPENSION

Description: IFS twin wishbones
Spring medium: Coil
Damper Type: Girling lever **Adjustable:** No
Anti-sway bar: Not fitted. **Adjustable:** -
Suspension adjustable: No. **Method:**
Comments: Anti-sway bar permitted. Ride height & spring rate free.

1.3 REAR SUSPENSION

Description: Live axle
Spring medium: Semi-elliptic leaf springs.
Damper type: Girling lever. **Adjustable:** No.
Anti-sway bar: Fitted **Adjustable:** No.
Suspension adjustable: No. **Method:**
Comments: Ride height & spring rate free.

1.4 STEERING

Type: Worm & peg. Some Worm & nut. **Make:** BMC.
Comments:

1.5 BRAKES

	Front	Rear
Type:	Drum	Drum
Dimensions:	7"	7"
Material of drum/disc:	Cast iron.	Cast iron.
No. cylinders/pots per wheel:	2	1
Actuation:	Hydraulic	A30 Mechanical, A35 Hydraulic.
Caliper Make, Material, Type:		
Master cylinder make:	Girling	Type: Single cylinder
Adjustable bias:	No.	
Servo Fitted:	No.	
Comments:	Tandem M/cylinder allowed; brake bias & servo assistance allowed.	

SECTION 2 - ENGINE

2.1 ENGINE

Make: BMC
Model: 'A' Series
No. cylinders: 4
Cylinder block material: Cast iron.
Bore - Original: 64.4mm
Stroke - original: 76.2mm
Capacity - original: 948cc
Cooling method: Liquid
Identifying marks:
Comments:

Configuration: In line
Two/Four Stroke: Four stroke.
Max. allowed: 65.9mm
Max. allowed: 76.2mm
Max. allowed: 978cc

2.2 CYLINDER HEAD

Make: BMC
No. of valves/cylinder: 2
No. of ports total: 5
No. of camshafts: 1
Valve actuation: OHV by pushrods & rockers.
Spark plugs/cylinder: 1
Identifying marks:
Comments:

Inlet: 1
Inlet: 2
Location: Block
Exhaust: 1
Exhaust: 3
Drive: Chain.

2.3 LUBRICATION

Method: Wet sump.
Dry sump pump type:
Oil cooler standard: No.
Comments: Oil cooler allowed.

Oil tank location:
Location:
Location:

2.4 IGNITION SYSTEM

Type: Coil & distributor.
Make: Lucas.
Comments:

2.5 FUEL SYSTEM

Carburettor Make: Zenith
Fuel injection Make: No.
Supercharged: No.
Comments: Twin carburettors allowed. Throat size unrestricted.

Model: 26VS & 26VME
Type:
Type

SECTION 3 - TRANSMISSION

3.1 CLUTCH

Make: Borg & Beck **Type:** Coil spring **Diameter:** 184mm
No. of Plates: 1
Actuation: Mechanical.
Comments:

3.2 TRANSMISSION

Type: 4 speed synchromesh
Make: BMC
No. forward speeds: 4 **Gearbox location:** Behind engine
Gear change type and location: Central on floor.
Case material: Aluminium. **Identifying marks:**
Comments: Ratios free.

3.3 FINAL DRIVE

Make: BMC **Model:** A Series
Wheel drive method: Rear.
Ratios:
Differential: BMC 'free' differential. **Type:**
Comments: Limited slip differentials not permitted.

3.4 TRANSMISSION SHAFTS (EXPOSED)

Number: 1
Description: Tubular steel with Hardy/Spicer type U/Joints.
Comments:

3.5 WHEELS & TYRES

Wheel type - Original:	Disc	Material - Original:	Steel.
Allowed:	Period alloy	Allowed:	Period alloy.
Fixture method:	Studs & nuts	No. studs:	4
	FRONT		REAR
Wheel dia. & rim width -			
Original:	13" x 3"		13" x 3"
Allowed :	13" x 5"		13" x 5"
Tyre Section -			
Original:	500 x 13"		500 x 13"
Allowed :	175 x 13"		175 x 13"

Comments: Minimum Aspect Ratio 65%; Tyre used must be on Group N Tyre List

SECTION 4 - GENERAL

4.1 FUEL SYSTEM

Tank Location: Under boot floor.

Capacity: 31 litres.

Fuel pump type and location: Mechanical on block.

Make: AC

Comments:

4.2 ELECTRICAL SYSTEM

Voltage: 12

Generator/Alternator fitted: Generator

Battery Location: Engine bay

Comments:

4.3 BODYWORK

Type: Saloon

Material: Steel

No. of seats: 4

No. doors: 2 or 4.

Comments:

4.4 DIMENSIONS

Track - Front: 1149mm

Rear: 1149mm

Wheelbase: 2019mm

Overall length: 3462mm

Dry weight: 635 Kg.

Comments:

4.5 SAFETY EQUIPMENT : *Refer applicable Group Regulations*