

CAMS

5TH CATEGORY - HISTORIC RACING

GROUP Nb

APPROVED VEHICLE SPECIFICATION

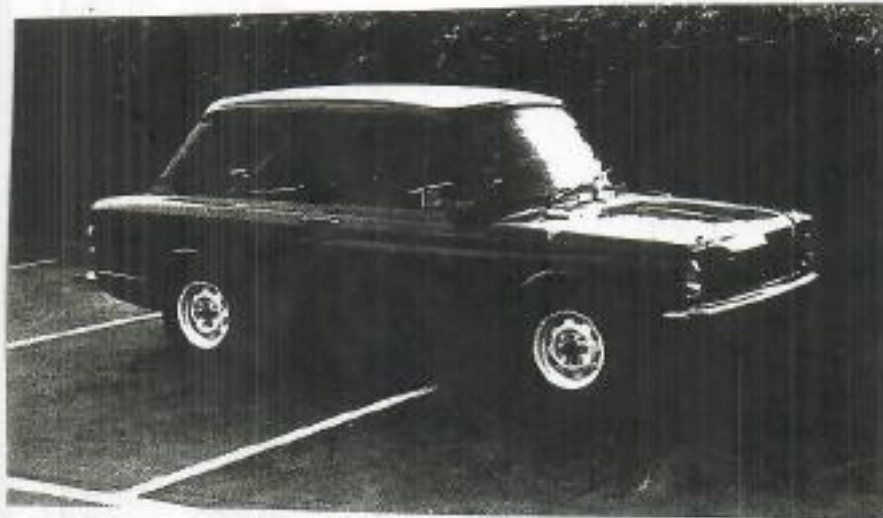
This form details the approved specifications of individual vehicle models in the 5th Category Historic car group. To be issued with an Historic Log Book, cars need to comply with these specifications, the physical appearance shown in the illustrations and the general historic rules as detailed in the current CAMS Manual of Motor Sport.

Make of Car: Hillman **Model:** Imp/Imp GT

Period of Original Manufacture: 1964/69

CAMS Historic Group: Nb

Date of Issue of this Document: June 2004



SECTION 1 - CHASSIS

1.1 CHASSIS FRAME

Description:	Unitary Construction	Period of Manufacture:
Manufacturer:	Rootes Group	1964/69
Chassis no. from:		
Chassis no. location:	Front Compartment	
Material:	Steel	
Comments:		

1.2 FRONT SUSPENSION

Description:	Independent – Swing Axle	
Spring medium:	Coil	
Damper Type:	Telescopic	Adjustable: Permitted
Anti-sway bar:	Not Fitted	Adjustable:
Suspension adjustable:	No	Method:
Comments:	Refer Group Nb regulations for permitted modifications	

1.3 REAR SUSPENSION

Description:	Independent – Trailing Arms	
Spring medium:	Coil	
Damper type:	Telescopic	Adjustable: Permitted
Anti-sway bar:	Not Fitted	Adjustable:
Suspension adjustable:	No	Method:
Comments:	Refer Group Nb regulations for permitted modifications.	

1.4 STEERING

Type:	Rack & Pinion	Make:	Rootes
Comments:			

1.5 BRAKES

Type:	Front	Rear
Dimensions:	Drum	Drum
Material of drum/disc	203 x 37mm	203 x 37mm
No. cylinders/pots per wheel:	Cast Iron	Cast Iron
Actuation:	2	1
Caliper: Make, Material, Type:	Hydraulic	Hydraulic
Master cylinder make:	Girling	Type: Single
Adjustable bias:		
Servo Fitted:	No	
Comments:	Dual Master Cylinders permitted.. Refer Group Nb regulations for permitted modifications.	

SECTION 2 - ENGINE

2.1 ENGINE

Make: Rootes
Model: Imp
No. cylinders: 4
Cylinder Block-material: Alloy
Bore - Original: 68mm (Opt. 72.55mm)
Stroke - original: 60.4mm
Capacity - original: 875cc (Opt. 998cc)
Cooling method: Water
Identifying marks:
Comments:

Configuration: In Line
Two/Four Stroke: 4 Stroke
Max. allowed: 69.5mm (Opt. 72.55mm)
Max. allowed: 60.4mm
Max. allowed: 909cc (Opt. 998cc)

2.2 CYLINDER HEAD

Make: Rootes
No. of valves/cylinder- 2
No. of ports total: 8
No. of camshafts: 1
Valve actuation: Direct
Spark plugs/cylinder: 1
Identifying marks:
Comments:

Inlet: 1
Inlet: 4
Location: Head
Exhaust: 1
Exhaust: 4
Drive: Chain

2.3 LUBRICATION

Method ((Wet/Dry Sump): Wet Sump
Dry sump pump type:
Oil cooler standard (Yes/No): No
Comments: Oil Cooler permitted. Refer Group Nb regulations for permitted modifications

Oil tank location:
Location (If Appl.):
Location (If Appl.):

2.4 IGNITION

Type: Coil & Distributor
Make: Lucas
Comments: Refer Group Nb regulations for permitted modifications.

2.5 FUEL FEED (Induction)

Carburettor/s :
Make :
Type/Model :
No. Fitted : 1
Size :

Fuel Inj'n :
Make :
Type/Model :
S/Charged (Yes/No):
Make (If Applic.):

Comments: Period carburettors of alternate make/size may be fitted . Maximum one choke per cylinder. Refer Group Nb regulations.

SECTION 3 - TRANSMISSION

3.1 CLUTCH

Make: Various **Type:** Dry Plate **Diameter:** Various
No. of Plates: 1
Method of Actuation : Hydraulic
Comments: Clutch & method of actuation are free.

3.2 TRANSMISSION

Type: Transaxle
Make: Rootes **Model:**
No. forward speeds: 4 **Gearbox location:** Rear
Gearchange type and location: Floor - Remote
Case material: Alloy **Identifying marks:**
Comments: Refer Group Nb regulations for permitted modifications.

3.3 FINAL DRIVE

Make: Rootes **Model :**
F/R/All Wheel Drive: Rear
Ratios: Various
Differential Type : Free **Make:** Rootes
Comments: Limited Slip differential permitted. Refer Group Nb regulations for permitted modifications,

3.4 TRANSMISSION SHAFTS (EXPOSED)

Number: 2 **Location:** Transaxle to Rear Wheels
Description: Individual Driveshafts
Comments:

3.5 WHEELS & TYRES

Wheel type:	Original: Pressed Steel Allowed: Steel or Period Alloy	Material:	Original: Steel	
Fixture method:	Bolt On	Allowed:	Steel or Alloy	
		No. studs:	4	
	FRONT		REAR	
Wheel dia. & rim width				
	Original: 4 x 12		4 x 12	
	Allowed: 5 x 12 or 13		5 x 12 or 13	
Tyre Section				
	Allowed:			
Min. Asp.Ratio Allowed :	60%		60%	
Comments:	13 inch wheels may replace original 12 inch . Refer Group Nb regulations for permitted modifications.			

SECTION 4 - GENERAL

4.1 FUEL SYSTEM

Tank Location: Front Capacity:
Fuel pump, type and location: Electric Make:
Comments: Fuel pump/s are free.

4.2 ELECTRICAL SYSTEM

Voltage: 12 Dynamo/Alternator fitted:
Battery Location: Front Alternator
Comments:

4.3 BODYWORK

Type: Two Door Saloon Material: Steel
No. of seats: 4 No. doors: 2
Comments:

4.4 DIMENSIONS

Track - Front: 1280mm Rear: 1250mm
Wheelbase: 2100mm Overall length: 3500mm
Dry weight: 630kg
Comments:

4.5 SAFETY EQUIPMENT

Fire extinguisher- required:
Seat belt-required:
Rollbar- required:
Electrical cut off switch- required:
Safety fuel tank- optional

RP:mr-Specblink.doc

