

CAMS

5TH CATEGORY - HISTORIC RACING

GROUP Nc

APPROVED VEHICLE SPECIFICATION

This form details the approved specifications of individual vehicle models in the 5th Category Historic car group. To be issued with an Historic Log Book, cars need to comply with these specifications, the physical appearance shown in the illustrations and the general historic rules as detailed in the current CAMS Manual of Motor Sport.

Make of Car: Ford **Model:** Mustang Boss 302

Period of Original Manufacture: November 1968 – November 1969

CAMS Historic Group: Nc

Date of Issue of this Document: 24th May 2000



This form was issued without alteration or erasure.

SECTION 1 - CHASSIS

1.1 CHASSIS FRAME

Description:	Unitary Construction	Period of Manufacture: 1968-1969
Manufacturer:	Ford	
Chassis no. from:	9- 02 100001	
Chassis no. location:	Left Side Engine Bay Panel	
Material:	Steel	
Comments:		

1.2 FRONT SUSPENSION

Description:	Independent by Upper Wishbone & Lower Track Control Arm	
Spring medium:	Coil Springs	
Damper Type:	Telescopic	Adjustable: Yes
Anti-sway bar:	Fitted	Adjustable: No
Suspension adjustable:	Yes	Method: Caster by tension rods; camber by cam at TCA pivot.

Comments: Ride height and spring rate may be changed by variation of coil springs; change of sway-bar diameter permitted; dampers free subject to original mountings being used and period technology limitation.

1.3 REAR SUSPENSION

Description:	Live Rear Axle	
Spring medium:	Leaf springs	
Damper type:	Telescopic	Adjustable: Yes
Anti-sway bar:	No	
Suspension adjustable:	No	

Comments: Addition of sway bar, trailing links, Panhard rod or Watts linkage permitted. Dampers free subject to use of original mountings and period technology limitations.

1.4 STEERING

Type:	Recirculating Ball	Make:	Ford
Comments:			

1.5 BRAKES

	Front	Rear
Type:	Disc	Drum
Dimensions:	287mm x 23.8mm	254mm x 44.4mm
Material of drum/disc	Cast Iron	Cast Iron
No. cylinders/pots per wheel:	1	1
Actuation:	Hydraulic	Hydraulic
Caliper: Make, Material, Type:	Kelsey Hayes - Ford floating caliper	
Master cylinder make:	Ford	Type: Tandem
Servo Fitted:	Yes	

Comments: Components from other touring cars manufactured before 31/12/72 may be used subject to swept area limitation (note respective rear drum width* on three models, which must be honoured). Twin master cylinders permitted subject to no structural modification of body shell. Brake bias adjustment permitted; adjustment by driver in normal driving position not permitted.

SECTION 2 - ENGINE

2.1 ENGINE

Make:	Ford		
Model:	Boss 302		
No. cylinders:	8	Configuration:	90° V8
Cylinder Block-material:	Cast Iron	Four Stroke	
Bore - Original:	101.6mm	Max. allowed:	103.1mm
Stroke - original:	76.2mm	Max. allowed:	76.2mm
Capacity - original:	4949cc	Max. allowed:	5091
Cooling method:	Water Cooled		
Identifying marks:	C9ZE-6015		

Comments: Boss 302 is a unique four bolt main bearing block. The Historic Commission has approved the use of Ford Motorsport block Part No. M-6010-A4 manufactured up to *circa* 1993. A LATER FORD MOTORSPORT BLOCK CARRYING THE SAME PART NO. IS NOT ELIGIBLE. REFER ATTACHED PHOTOGRAPH IDENTIFYING THE ELIGIBLE CYLINDER BLOCK

2.2 CYLINDER HEAD

Make:	Ford				
No. of valves/cylinder-		Inlet:	1	Exhaust:	1
No. of ports total:	8-	Inlet:	4	Exhaust:	4
No. of camshafts:	1	Location:	Cylinder Block	Drive:	Roller chain
Valve actuation:	Pushrods				
Spark plugs/cylinder:	1				

Identifying marks: C8FE or C9ZE are the only acceptable prefixes.
Comments:

2.3 LUBRICATION

Method:	Wet sump		
Oil cooler standard:	No but permitted	Location:	May not be external to bodywork
Comments:			

2.4 IGNITION SYSTEM

Type:	Coil and conventional type distributor
Make:	Autolite

Comments: Replacement distributors permitted, but must employ points (breakerless units not permitted). Regulators permit use of electronic rev. limiters.

2.5 FUEL SYSTEM

Carburettor:	Make: Holly	Model: 9510
---------------------	--------------------	--------------------

Comments: Freedom of number and type of carburettor is allowed subject to the carburettor used being commercially available prior to 31/12/1972.

SECTION 3 - TRANSMISSION

3.1 CLUTCH

Make: Ford **Type:** Diaphragm **Diameter:** 267mm
No. of Plates: 1
Actuation: Hydraulic
Comments:

3.2 TRANSMISSION

Type: 4 speed synchromesh
Make: Ford **Model:** "Top Loader"
No. forward speeds: 4 **Gearbox location:** Behind engine
Gearchange type and location: Remote floorshift
Case material: Cast Iron **Identifying marks:**
Comments:

3.3 FINAL DRIVE

Make: Ford **Model:** 9" ring gear
Wheel drive method: Rear
Differential: Both "Traction-lok" and Detroit "Locker" differentials were fitted as original equipment
Comments: Regulations permit freedom of differential action.

3.4 TRANSMISSION SHAFTS (EXPOSED)

Number: 1 **Location:** Gearbox to rear axle
Description: Single piece tubular steel shaft with hardy-Spicer type U/Joints
Comments:

3.5 WHEELS & TYRES

Wheel type: **Original:** Pressed steel
 Allowed: Pressed steel or period alloy
Fixture method: Studs & nuts (5)
Wheel dia. & rim width
 Original: 15" x 7"
 Allowed: 15" x 8"
Aspect ratio - minimum: 60%
Comments:

SECTION 4 - GENERAL

4.1 FUEL SYSTEM

Tank Location: Under rear of car – forms boot floor **Capacity:** 75 Litres
Fuel pump, type and location: Both mechanical (engine mounted and electric fuel pumps were fitted as original equipment.

Comments:

4.2 ELECTRICAL SYSTEM

Voltage: 12 Volts **Alternator fitted**
Battery Location: Engine compartment or boot

Comments:

4.3 BODYWORK

Type: Closed **Material:** Steel
No. of seats: 4 **No. doors:** 2
Comments:

4.4 DIMENSIONS

Track - Front: 1506mm **Rear:** 1486mm
Wheelbase: 2743mm **Overall length:** 4470mm
Dry weight: 1238 Kg
Comments:

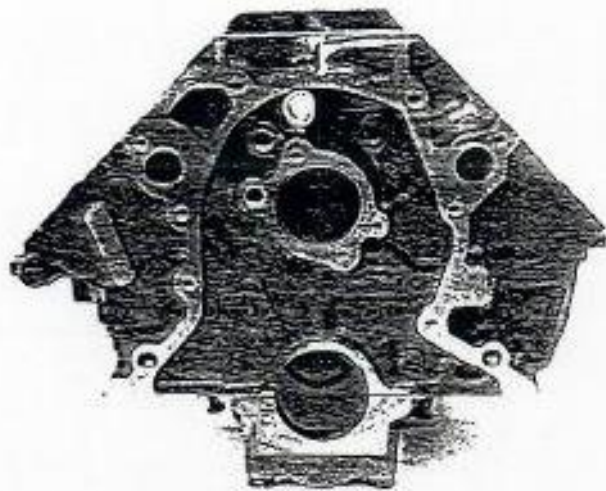
4.5 SAFETY EQUIPMENT

Fire extinguisher required
Seat belt required
Rollbar required
Electrical cut off switch required
Safety fuel tank optional

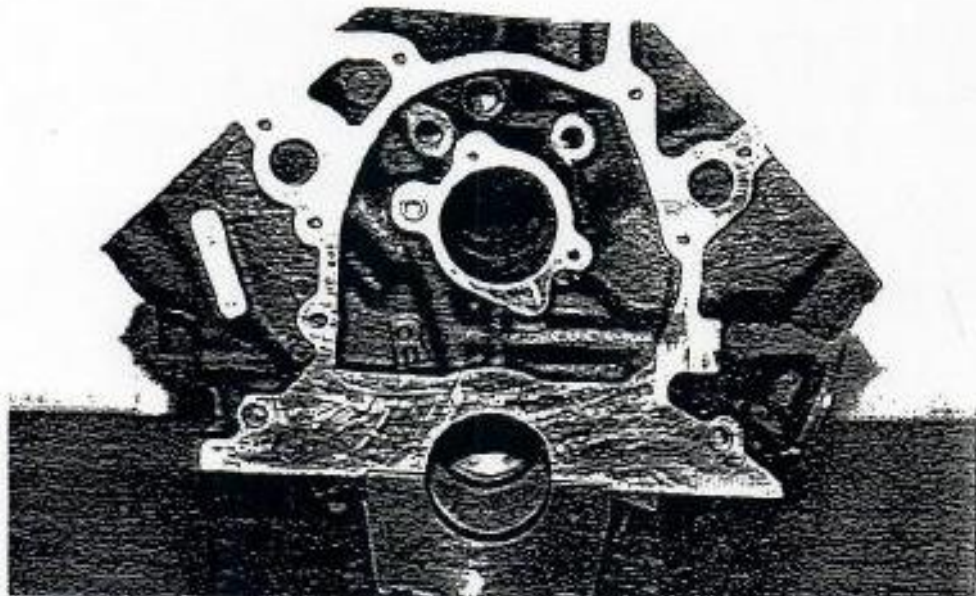
GH-Ford Mustang Boss 302.doc

ATTACHMENT TO FORD MUSTANG BOSS 302 SPECIFICATION SHEET

Identification of Ford Motorsport Cylinder Block P/No.M-6016-A4 Approved by Historic Commission
as a Replacement for Original Ford Mustang Boss 302 Cylinder Block P/No.C9ZE - 6015.



FRONT VIEW OF APPROVED BLOCK P/NO. M - 6016 - A4



FRONT VIEW OF LATER VERSION OF M - 6010 - A4 NOT APPROVED FOR HISTORICS



AUTOMOBILE COMPETITION COMMITTEE
FOR THE UNITED STATES, FIA, INC.

433 MAIN ST.
STAMFORD, CONN. 06901
(203) 348-6233

5273.

M
Boss
302
G1

Federation Internationale de l'Automobile
FORM OF RECOGNITION

In accordance with appendix "J" of the International Sporting Code

Cylinder capacity 4948.9 cm3 302 in3

Manufacturer Ford Motor Company Model 1969 Mustang Boss 302 (#63)

Serial # Chassis 9 02 100001 Manufacturer Ford

Serial # Engine None Manufacturer Ford

Recognition valid from 1/4/69 List 69/2.

The manufacturing of the model described in this recognition form was started on November 4, 1968 and the minimum production of 10,000 identical cars, in accordance with the specifications of this form, was reached on January 17, 1969.

- (*) need not be answered for Group II and III cars.
- (**) only need to be answered for Group IV cars.

A 3/4 Front View Car **



The vehicle described in this form has been subject to the following amendments:

Variants

on	<u>19</u>	rec #	<u>list</u>
on	<u>19</u>	rec #	<u>list</u>
on	<u>19</u>	rec #	<u>list</u>

Normal evolution of the type

on	<u>19</u>	rec #	<u>list</u>
on	<u>19</u>	rec #	<u>list</u>
on	<u>19</u>	rec #	<u>list</u>



Stamp/Signature of
National Sporting Authority

John V. Oliveau

JOHN V. OLIVEAU
TECHNICAL DIRECTOR

Stamp/Signature

F.I.A. b
pour le Secretaire de la C.S.I.

Battarson (1)

MAKE Ford

MODEL '69 Mustang Boss 302 FIA REC # 273

B 3/4 rear car (**)



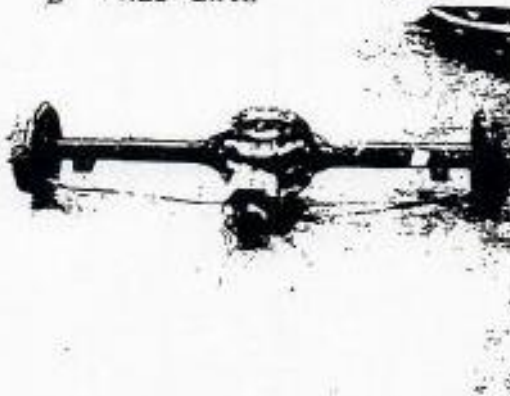
C interior-car (**)



D front axle (**)



E rear axle (**)



F brake, front (**)



G brake, rear (**)



H gear box (**)



I exhaust system (**)



STAMP

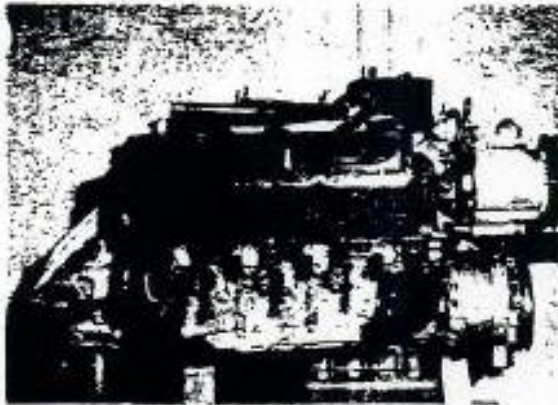
STAMP

MAKE Ford

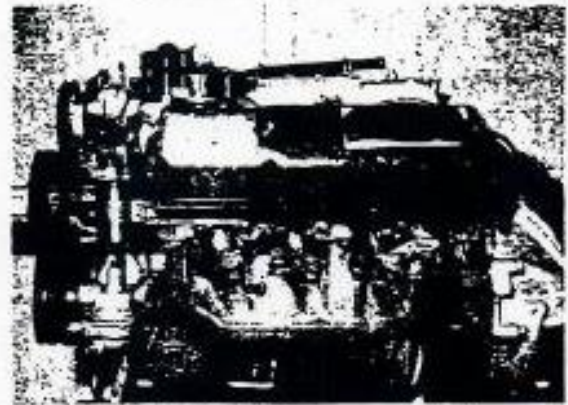
MODEL '69 Mustang Boss 302 PIA REC # 5273

M
Boss
302
CI

J ENGINE RIGHT (**)



K ENGINE LEFT (**)



L COMBUSTION CHAMBER

M PISTON TOP (*)



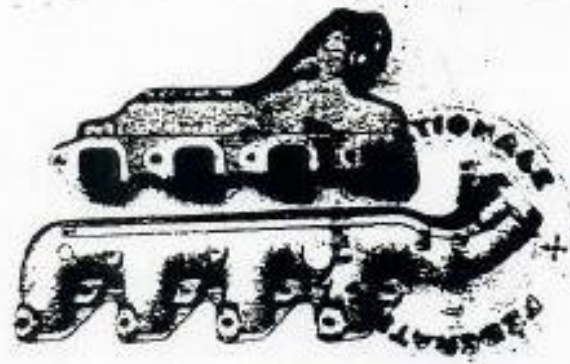
N CARBURETOR (*)

O ENGINE IN PLACE (**)



P MANIFOLD INLET

Q MANIFOLD EXHAUST



I.D.
2.32"

Strip out: ALL SKETCHES MUST INDICATE ACTUAL DIMENSIONS AND MANUFACTURER'S TOLERANCES.

STAMP

STAMP

(3)

MAKE Ford

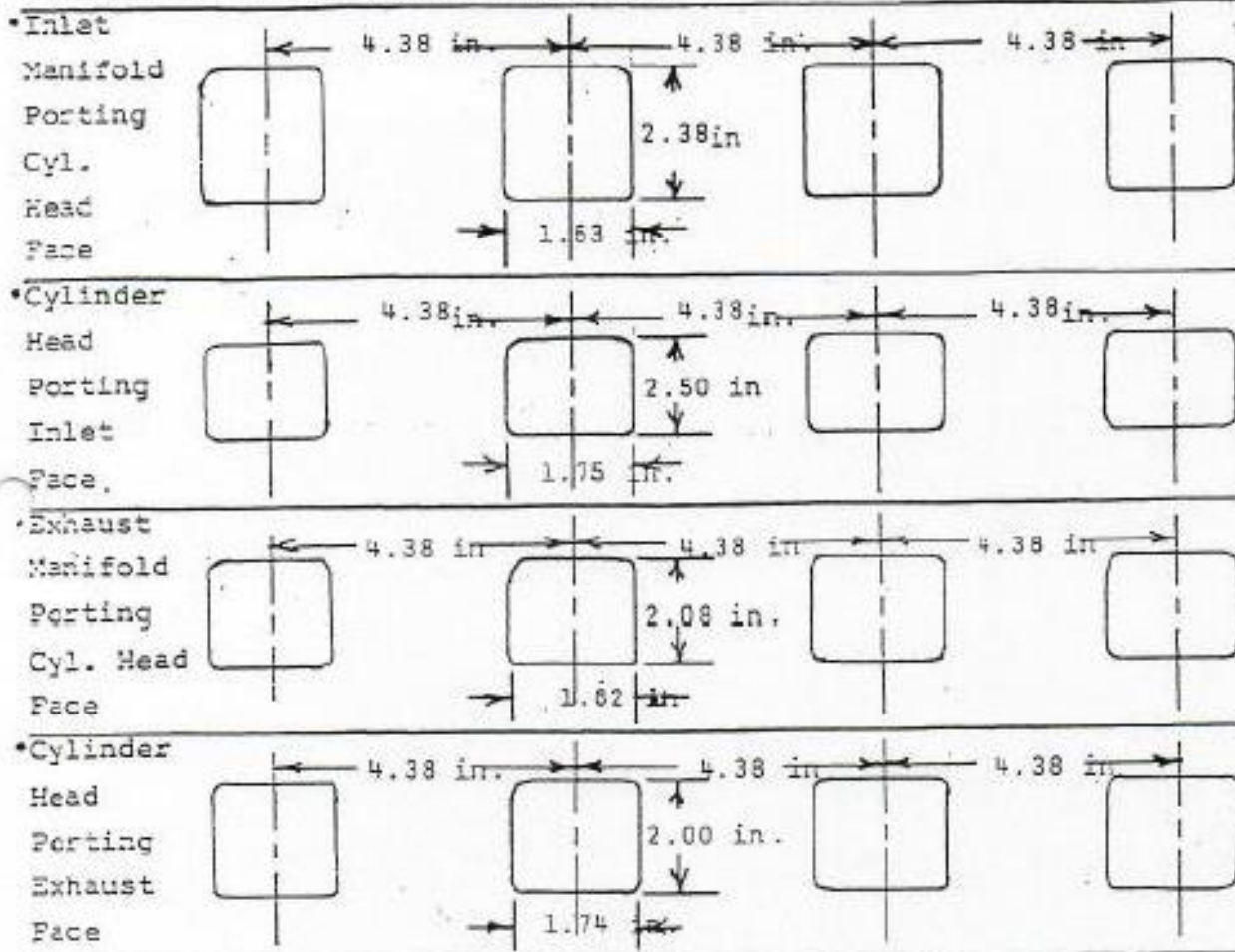
MODEL 69 Mustang

FIA REC # 5773

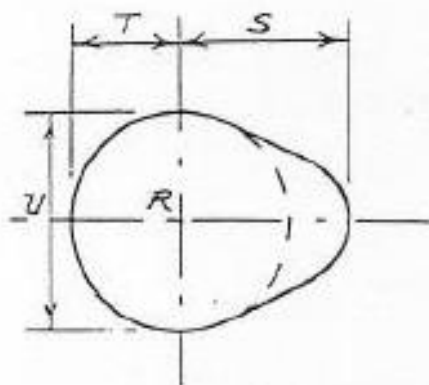
M
Boss
302
G I

Boss 302

ALL SKETCHES MUST INDICATE ACTUAL DIMENSIONS AND MANUFACTURER'S TOLERANCES. +/- .04 in. or +/- 1 mm



CAM



Inlet cam			
S=	25.35	mm	.998 in
T=	17.73	mm	.698 in
U=	35.46	mm	1.396 in

Exhaust cam			
S=	25.35	mm	.998 in
T=	17.73	mm	.698 in
U=	35.46	mm	1.396 in

STAMP

STAMP

MAKE Ford MODEL '69 Mustang Boss 302 REC # 5273

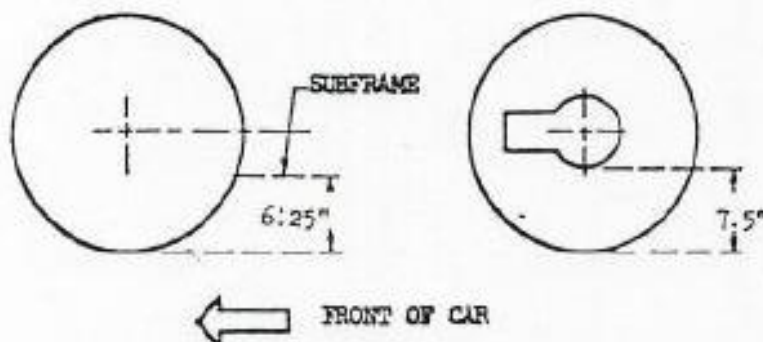
IMPORTANT: Questions 1 through 9 must be answered in two measuring systems, one of which must be the metric system.
See conversion table at index.

CAPACITIES & DIMENSIONS

- (**) 1. Wheelbase 2743.2 mm 108.0 in At 0° Camber
- (**) 2. Front track 1506.2 mm 59.3 in + 0" Toe-In
- (**) 3. Rear track 1485.9 mm 58.5 in +
+ Differences in track resulting from use of optional wheel and rim sizes must be stipulated on recognition application forms. *See Note Below

Dimensional relationship between track (front and/or rear) and ground clearance resulting from use of optional wheel sizes shall also be stipulated and a sketch illustrating suspension reference points shall be shown below to establish the "reference chassis height." The reference chassis height dimension is to be used only when checking track and shall not affect eligibility of car in any manner.

Sketch, Ground Clearance: Dimensional Suspension & Chassis Reference Points"



Note: * Geometry changes in front suspension will alter track.

- 4. Overall length of car 477 cm 187.4 in
- 5. Overall width of car 182.1 cm 71.7 in
- 6. Overall height of car 128 cm 50.4 in
- 7. Capacity of fuel tank (reserve included) 75.70 ltrs.
20 gallons US 16.66 gallons, Imp.
- 8. Seating capacity Four (4)
- (**) 9. Weight - total weight of car with normal equipment, water, oil and spare wheel but without fuel or repair tools.
1238 kg 2764 lbs



STAMP



MAKE FordMODEL '69 Mustang Boss 302

FIA REC #

5273M
Bos
302
G1CHASSIS & BODYWORK - Photos A, B, C

- (**) 20. Chassis/body construction - separate/unit construction Sheet Steel
- (**) 21. Unit construction - material/s Steel separate construction
- (**) 22. Chassis - material/s Steel separate construction
- (**) 23. Body - material/s Steel separate construction
- (**) 24. Doors - numberTwo (2)material/s Steel
- (**) 25. Hood - material/s Steel
- (**) 26. Trunk Lid - material/s Steel
27. Window, Rear - material/s Glass
28. Windshield - material/s Glass
29. Windows, front door - material/s Glass
30. Windows, rear door - material/s None
31. Windows - actuating system Regulator
32. Window, rear quarter - material/s Glass/Hinged

ACCESSORIES AND UPHOLSTERY

38. Heating, interior - yes no Optional
39. Air conditioning - yes no Optional
40. Ventilation - yes no
- (*) 41. Seats, front - type of seat and upholstery Bucket/Vinyl
42. Seats, front - weight (complete with supports & rails out of car) 14 kg 35.2 lbs ea. Optional
- CHECK: BENCH _____ BUCKET X CONSOLE INCLUDED _____
43. Seats, rear - type of seat and upholstery Bench/Vinyl
44. Bumper, front - material/s Steel kg 5.13 lbs 11.3 Weight
45. Bumper, rear - material/s Steel kg 5.76 lbs 12.7 Weight

WHEELS

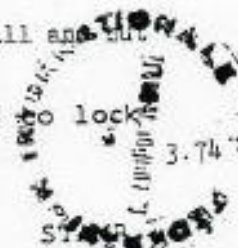
50. Type Steel
51. Weight (per wheel, without tire) 8.9 kg 19.5 lbs
52. Method of attachment Stud and Nut (5)
53. Rim, diameter 381 mm 15 in
54. Rim, width 170.8 mm 7 in

STEERING

60. Type Recirculating ball and nut
61. Servo assistance Optional
62. Number of turns of steering wheel from lock to lock 3.74 4.64
63. In case of servo assistance



STAMP



(6)

MAKE FordMODEL '69 Mustang Boss 302 FIA REC # 5723X
Boss
302
G1SUSPENSION

(**)	70.	Suspension, front (photo D) - type	Independent
(**)	71.	Spring - type	Coil
(*)	72.	Stabilizer - if fitted	No
	73.	Shock absorbers - number	Two (2)
	74.	Type	Tubular-Adjustable
(**)	78.	Suspension, rear (photo E) - type	Live Axle
(**)	79.	Spring - type	Leaf
(*)	80.	Stabilizer - if fitted	No
	81.	Shock absorbers - number	Two (2)
	82.	Type	Tubular-Adjustable

 BRAKES (Photos E and F)

(**)	90.	Method of operation	Hydraulic
(*)	91.	Power assisted (if fitted) - type	Pedal Boost
	92.	Master Cylinders - number and type (indicate if duplex master cylinder)	One (1) Dual <u>Front</u> <u>Rear</u>
	93.	Cylinders - number per wheel	One (1) One (1)
	94.	Cylinders - wheel bore (indicate stepped bore dimensions if applicable)	60.2 mm 2.375in 22.2mm .875 in

Drum Brakes

		<u>Front</u>	<u>Rear</u>
95.	Diameter, inside	mm	in 254mm 10.0 in
96.	Linings, length	mm	in 91.2mm 19.3in
97.	Linings, width	mm	in 44mm 1.75in
98.	Shoes - number per brake		Two (2)
99.	Area, total - per brake	mm ²	in ² 21,800 233.65in ²

Disc Brakes

100.	Diameter, outside	257.0 mm	11.3 in	mm	in
101.	Thickness of disc	23.81mm	.935in	mm	in
102.	Lining - length	124.5 mm	4.9 in	mm	in
103.	Lining - width	52.6 mm	2.07 in	mm	in
104.	Pads - number per brake	Two	(2)		
105.	Area, total - per brake	13,097.5 mm ²	20.3in ²	mm ²	in ²



STAMP

(7)

MAKE Ford

MODEL '69 Mustang Boss 302 FIA REC # 573

ENGINE (Photos J and K)

-) 130. Cycle two four Wankel
- (*) 131. Cylinders - number Eight (3)
- (**) 132. Cylinders - arrangement Vee Wankel - # of elements and basic dimensions
- (**) 133. Bore 101.6 mm 4.0 in
- (**) 134. Stroke 76.2 mm 3.0 in
- (**) 135. Cylinders - capacity 619.4 cm3 37.5 in3
- (**) 136. Cylinders, total capacity 494.9 cm3 30.2 in3
- (**) 137. Cylinder Block - material/s Cast Iron
- (*) 138. Sleeves - material/s (if fitted) None
- (**) 139. Head, cylinder - material/s Cast Iron number fitted Two (2)
- (**) 140. Port, inlet - number Eight (8)
- (**) 141. Port, exhaust - number Eight (8)
- (*) 142. Compression - ratio 10.5:1
- (*) 143. Combustion chamber - volume 62.77cm3 3.826 in3
- (*) 144. Piston - material/s Aluminum Alloy With Steel Struts
- (*) 145. Rings - number Three (3)
- (*) 146. Distance from gudgeon pin centre line to highest point of piston crown 45.72 mm 1.80 in
- (**) 147. Crankshaft - cast-forged-mach from solid
- (**) 148. Crankshaft - type - integral - sectioned - # of sections
- (**) 149. Crankshaft, main bearings - number Five (5)
- (**) 150. Bearing cap - material/s Cast Iron
- 151. Lubrication - system - dry sump/oil in sump
- 152. Lubricant - capacity 7.568 ltrs pts 8 qts US
- (*) 153. Cooler, oil - yes no
- 154. Cooling - method Water Radiator
- 155. Cooling - capacity of system 14.76 ltrs pts 16.1 qts US



STAMP

MAKE Ford MODEL '69 Mustang Boss FIA REC # 5243 ³⁰² ₃₀₂ ^M ₃₀₂ ^{Boss} _{G1}

- (*) 156. Fan, cooling (if fitted) - diameter 44.6/43.6 cm 17.56/17.17 in
(*) 157. Fan, cooling - number of blades 5/4 material/s Aluminum/Steel

BEARINGS

- (**) 158. Crankshaft, main - type Insert diameter 57.11 mm 2.249 in
(**) 159. Connecting rod, big end - type Insert diameter 53.9 mm 2.1230 in

WEIGHTS

- (*) 160. Flywheel (clean) 9.07 kg 20.0 lbs \pm 5%
(*) 161. Flywheel with clutch (all rotating parts) 30.30 kg 66.8 lbs \pm 5%
(*) 162. Crankshaft 21.32 kg 47 lbs \pm 5%
163. Connecting Rod .748 kg 1.65 lbs \pm 5%
(*) 164. Piston with rings & pin .552 kg 1.216 lbs \pm 5%

FOUR CYCLE ENGINES

- (**) 170. Camshafts - number One (1) material/s Alloy Iron
(**) 171. Camshaft - location Cylinder Block
(**) 172. Camshaft Drive, type Chain
(**) 173. Valve operation - type Tappet, Pushrod, Rocker

INLET (See Photo P) (for addtl info re 2 stroke engines and super charged, see page 15)

180. Inlet manifold - materials Aluminum
181. Valves (overall) - diameter 56.642 mm 2.23 in
(*) 182. Valve lift - maximum 12.70 mm .50 in
183. Springs, valve - number Two (2)
184. Spring - type Coil and Flat
(**) 185. Valves, per cylinder - number One (1)
(*) 186. Tappet - clearance for checking timing (cold) .635 mm .025 in
(*) 187. Valves - open at (with tolerance for tappet clearance indicated) 41° BIC
(*) 188. Valves - close at (with tolerance for tappet clearance indicated) 79° ABC
(*) 189. Air filter - type Dry Element

STAMP



STAMP



MAKE Ford

302
MODEL '69 Mustang Boss RIA REC # 523

M
Boss
302
G1

EXHAUST (See Photo Q)

195. Manifold, exhaust - material/s Cast Iron
196. Valves (overall) - diameter 43.43 mm 1.71 in
197. Valve, lift - maximum 12.70 mm .50 in
198. Valve Springs/valve - number Two (2)
199. Springs - type Coil and Flat
- (**) 200. Valves - number per cylinder One (1)
- (*) 201. Tappet - clearance for checking timing (cold)
.635 mm .025 in
- (*) 202. Valves - open at (with tolerance for tappet clearance indicated) 85° BBC
- (*) 203. Valves - close at (with tolerance for tappet clearance indicated) 35° ATC

CARBURETION (See Photo N)

210. Carburetors, fitted - number One (1)
211. Type Downflow
- (*) 212. Make Holley
- (*) 213. Model 9510
214. Carburetors - number of mixture passages Four (4)
- (*) 215. Carburetor - flange hole diameter of exit port
42.875 mm 1.688 in
216. Venturi - throat diameter+ 33.35 mm 1.313 in

INJECTION

220. Pump - make None Fitted
221. Plungers - number
- (*) 222. Pump - model
223. Injectors - location
224. Injectors - total number
- (*) 225. Inlet pipe - minimum diameter mm in

+ For variable throat type carburetors, indicate minimum lift of shutter mechanism such as pistons in S.U.

STAMP

STAMP

(10)

MAKE Ford MODEL '69 Mustang Boss ³⁰² FIA REC # 5273

M
Boss
302
Cl

ENGINE ACCESSORIES

- (*) 230. Pump, fuel - mechanical and/or electrical
231. Number fitted One (1) Each Two (2) Total
232. Ignition system - type Battery and Coil
233. Distributors - number One (1)
234. Coils, ignition - number One (1)
235. Spark plugs - number per cylinder One (1)
236. Generator (or Alternator) - number fitted One (1)
237. Drive - method Belt
238. Voltage, generator - volts 12.8
239. Battery - number One (1)
240. Location Engine Compartment or Trunk
241. Voltage - volts 12 amp hrs 45

ENGINE & CAR PERFORMANCE as declared by mfr. in catalogue

- (*) 250. Horsepower - maximum engine output 290 at 6000 rpm SAE
(indicate SAE or DIN)
- (*) 251. RPM - maximum 6000 output at that figure 290
- (*) 252. Torque - maximum 345 at 3200 rpm
- (*) 253. Speed - maximum km/hour miles/hour

DRIVE TRAIN

Clutch

260. Type Dry Plate
261. Plates - number of driven One (1)
262. Plates - diameter 26.7 cm 10.5 in
263. Linings - diameter - inside 16.5 cm 6.5 in
- Linings - diameter - outside 26.7 cm 10.5 in
264. Method of operation Mechanical

STAMP

STAMP

MAKE Ford MODEL 69 Mustang Boss 302 FIA REC # 5223 M Boss 302 01

Gear Box (Photo H)

- (**) 270. Manual type - make Ford
- (**) 271. Ratios, forward - number Four (4)
- 272. Ratios, forward - number synchronized Four (4)
- 273. Gear-Shift - location Floor optional
- (**) 274. Automatic - make Ford type Hydraulic with Planetary Gears and Torque Converter.
- (**) 275. Ratios, forward - number Three (3)
- 276. Gear-Shift - location Floor

277.	Manual		Automatic		Alternative manual/automatic			
	Ratio	# Teeth	Ratio	# Teeth	Ratio	# Teeth	Ratio	# Teeth
1	2.78	$\frac{23}{30} \frac{32}{15}$	2.46		2.32	$\frac{23}{25} \frac{32}{15}$		
2	1.93	$\frac{23}{30} \frac{31}{21}$	1.46	Torque Converter Maximum Ratio at Stall 2.02:1	1.69	$\frac{23}{25} \frac{28}{18}$		
3	1.36	$\frac{23}{30} \frac{25}{24}$	1.00		1.29	$\frac{23}{25} \frac{25}{21}$		
4	1.0	Direct			1.0	Direct		
5								
6								
reverse	2.78		2.20		2.32			

- 278. Overdrive - type None Fitted
- 279. Forward gears on which overdrive can be selected
- 280. Overdrive - ratio

FINAL DRIVE

- (**) 290. Type Hypoid, Semi-Floating, Straddle, Mounted Pinion
- (**) 291. Differential - type Locking-By Ratchet or Friction
- (**) 292. Limited Slip Differential (if fitted) - type \neq Positive locking by Ratchet or Friction.
- 293. Ratio 3.25 3.50 3.70 3.91 4.11 4.30
- Teeth - number $\frac{39}{12}$ $\frac{35}{10}$ $\frac{37}{10}$ $\frac{43}{11}$ $\frac{37}{9}$ $\frac{43}{10}$



STAMP

STAMP

MAKE Ford

MODEL '69 Mustang Boss

302

FIA REC #

5273

M
Boss
302
G1

IMPORTANT

The conformity of the car with the following items of the present recognition form is to be disregarded during the technical inspection when the vehicle has been entered in Group II (Touring Cars) or III (Grand Touring Cars):

41, 72, 80, 91, 142, 143, 144, 145, 146, 153, 156, 157, 160, 161, 162, 163, 164, 182, 186, 187, 188, 189, 201, 202, 203, 212, 213, 215, 216, 222, 225, 230, 250, 251, 252, 253, 255, photos I, M, N & items on page 5 as indicated.

During the technical inspection of cars entered in Group IV (Sports Cars) only the following items of the present recognition form are to be taken into consideration:

1, 2, 3, 9, 20, 21, 22, 23, 24, 25, 26, 70, 71, 78, 79, 90, 130, 131, 132, 133, 134, 135, 136, 137, 138, 139, 140, 141, 147, 148, 149, 150, 158, 159, 170, 171, 172, 173, 185, 200, 270, 271, 274, 275, 290, 291, 292 & photos A, B, D, E, F, G, H, J, K, O.

Optional equipment affecting preceding information:

CATALOGUE PART NUMBER MUST BE GIVEN

57MS-6675-B Sump Guard.



Automatic Transmission Photo H

Code #C4



Interior with Automatic Transmission

STAMP

