

CAMS

5TH CATEGORY - HISTORIC RACING

GROUP Nb

APPROVED VEHICLE SPECIFICATION

This form details the approved specifications of individual vehicle models in the 5th Category Historic car group. To be issued with an Historic Log Book, cars need to comply with these specifications, the physical appearance shown in the illustrations and the general historic rules as detailed in the current CAMS Manual of Motor Sport

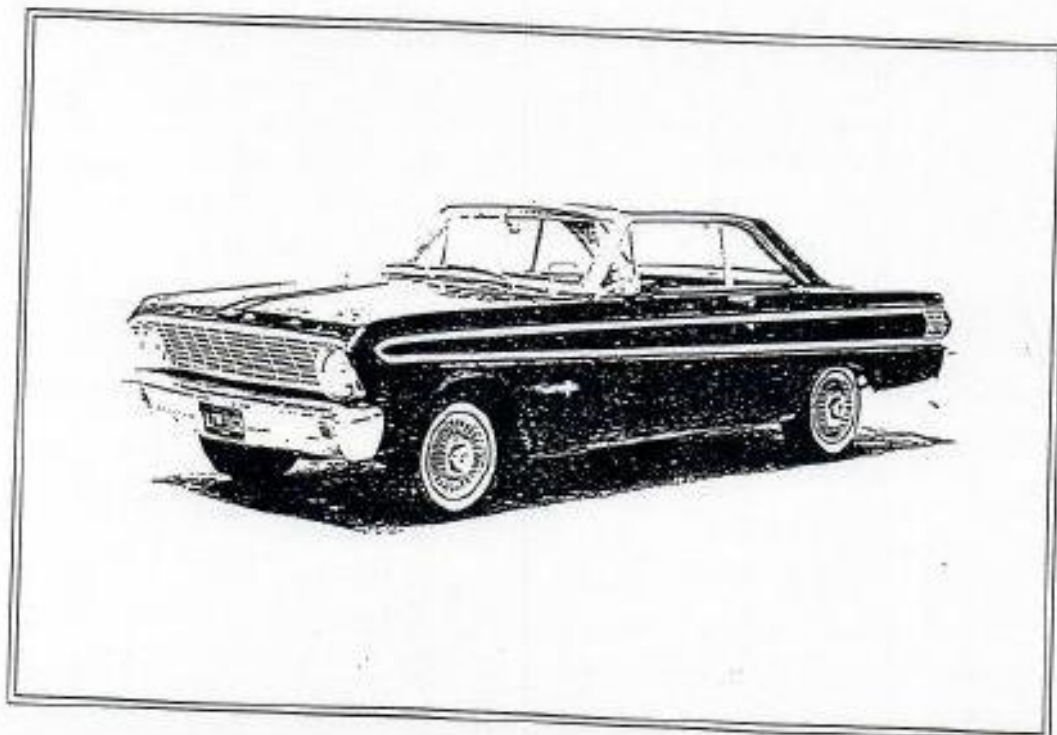
Make of Car: Ford

Model: Falcon Rally Sprint

Period of Original Manufacture: 1964

CAMS Historic Group: Nb

Date of Issue of this Document: 17 July 1997



SECTION 1 - CHASSIS

1.1 CHASSIS FRAME

Description:	Integral	Period of Manufacture:
Manufacturer:	Ford USA	Aug 1963 - Aug 1964
Chassis no. from:	4H13F-00001	
Chassis no. location:		
Material:	Steel	
Comments:	Cars originally LHD only	

1.2 FRONT SUSPENSION

Description:	Independent by upper wishbone & lower TCA with forward link		
Spring medium:	Coil		
Damper Type:	Hydraulic Telescopic	Adjustable:	Permitted
Anti-sway bar:	Non-adjustable originally fitted	Adjustable:	Permitted
Suspension adjustable:	Yes	Method:	By eccentric TCA pivot

Comments: Modifications permitted - refer Article 3.4 of Group N(b) regulations

1.3 REAR SUSPENSION

Description:	Live rear axle		
Spring medium:	Semi-elliptic leaf springs		
Damper type:	Hydraulic Telescopic	Adjustable:	Permitted
Anti-sway bar:	Not originally fitted	Adjustable:	
Suspension adjustable:	No	Method:	

Comments: Modifications permitted - refer Article 3.4 of Group N(b) regulations

1.4 STEERING

Type:	Recirculating ball & nut	Make:	Ford
Comments:			

1.5 BRAKES

Type:	Front	Rear
Dimensions:	Disc	Drum
Material of drum/disc:	292mm x 31.75mm	279.4mm x 52mm
No. cylinders/pots per wheel:	Cast Iron	Pressed Steel
Actuation:	Four	One
Caliper: Make, Material, Type:	Hydraulic	Hydraulic
Master cylinder make: Kelsey Hayes	Kelsey Hayes Cast Iron	
Adjustable bias: Not originally fitted.	Type:	
Servo Fitted	Yes	

Comments: Brake modifications permitted - refer Article 3.5 of Group N(b) regulations

SECTION 2 - ENGINE

2.1 ENGINE

Make: Ford
Model: W289HP or W302 blocks permitted
No. cylinders: 8 **Configuration:** V-8
Cylinder Block-material: Cast Iron **Four Stroke**
Bore - Original: 101.76mm **Max. allowed:** 103.26mm
Stroke - original: 72.9mm **Max. allowed:** 72.9mm
Capacity - original: 4272cc **Max. allowed:** 4868cc
Cooling method: Water Cooled
Identifying marks: (TBA)

Comments: Cylinder blocks with either 5 bolt or 6 bolt bell housing fixture permitted

2.2 CYLINDER HEAD

Make: Ford
No. of valves/cylinder- 2 **Inlet:** 1 **Exhaust:** 1
No. of ports total: 8 **Inlet:** 4 **Exhaust:** 4
No. of camshafts: 1 **Location:** Cyl block **Drive:** Chain
Valve actuation: Camfollowers, pushrods & rockers
Spark plugs/cylinder: 1
Identifying marks: (TBA)
Comments:

2.3 LUBRICATION

Method: Wet Sump **Oil tank location:** N/A
Dry sump pump type: N/A **Location:** N/A
Oil cooler standard: Yes **Location:** Behind radiator support panel LHS

Comments: Aperture in LHS radiator support panel permitted for oil cooler.

2.4 IGNITION

Type: Coil & Distributor
Make: Ford
Comments:

2.5 FUEL FEED

Carburettor: Make: Carter **Model:** CARA-9510-A-B **No:** 1 **Size:** N/A
Fuel injection Make: N/A **Type:**
Supercharged: No **Type:**
Make:

Comments: Refer Article 3.2 of Group N(b) Regulations for carburettor freedoms.

SECTION 4 - GENERAL

4.1 FUEL SYSTEM

Tank Location: Boot Capacity: 102 litres
Fuel pump, type and location: Mechanical, on engine Make: AC/Carter/Stewart-Warner
Comments:

4.2 ELECTRICAL SYSTEM

Voltage: 12V Alternator fitted:
Battery Location: Engine Compartment
Comments:

4.3 BODYWORK

Type: Closed Touring Car Material: Steel
No. of seats: 5 No. doors: 2
Comments: FRP panels permitted: - bonnet, front mudguards, door skins and boot.
Front and rear bumpers of aluminium permitted as alternative to steel.

4.4 DIMENSIONS

Track - Front: Original 1397mm Rear: Original 1249mm
Wheelbase: 2781mm Overall length: 4612mm
Dry weight: 1100kg
Comments:

4.5 SAFETY EQUIPMENT

Fire extinguisher required
Seat belt required
Rollbar required
Electrical cut off switch required
Safety fuel tank optional